

Hearing configurations: Eyewear volume

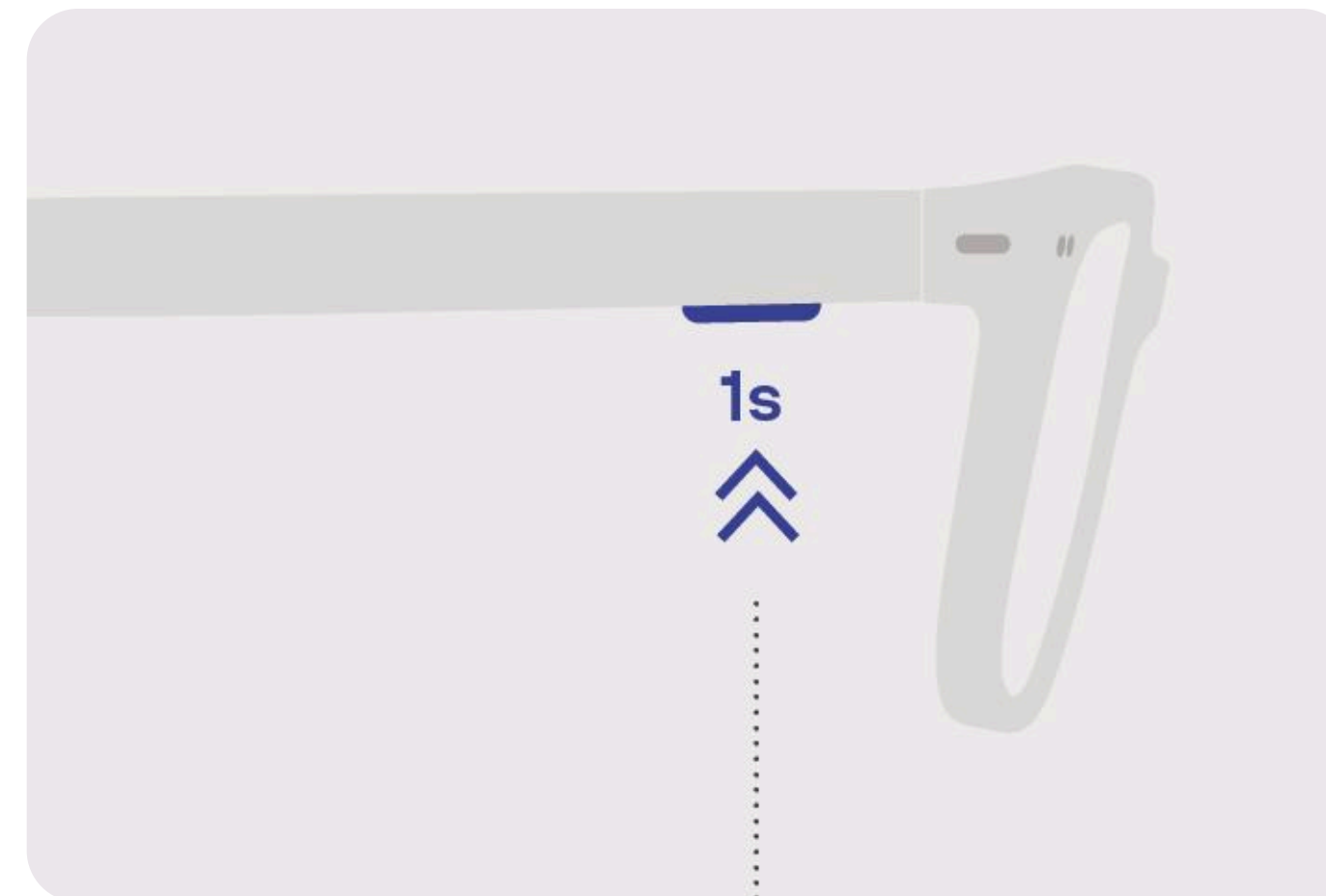


How to adjust eyewear volume?

When it comes to your Nuance Audio Glasses, you can always adjust the volume levels in several ways.

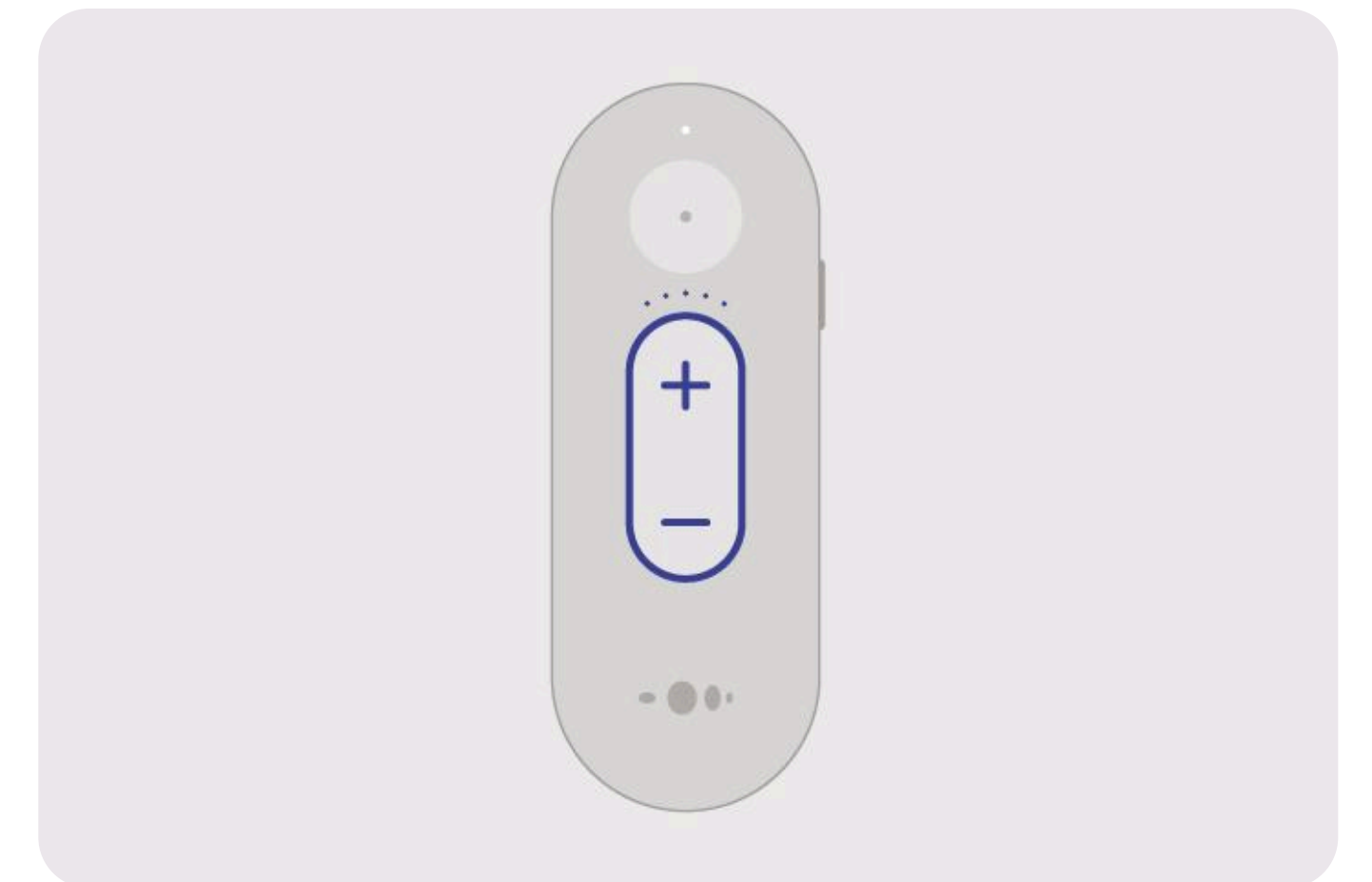
With Nuance Audio Glasses

You can Short Press by pressing the button on the right temple to cycle through the volume levels. An audio prompt will confirm each change.



With Remote Control

You can use the designated volume levels by pressing + and - buttons to increase or decrease the volume.

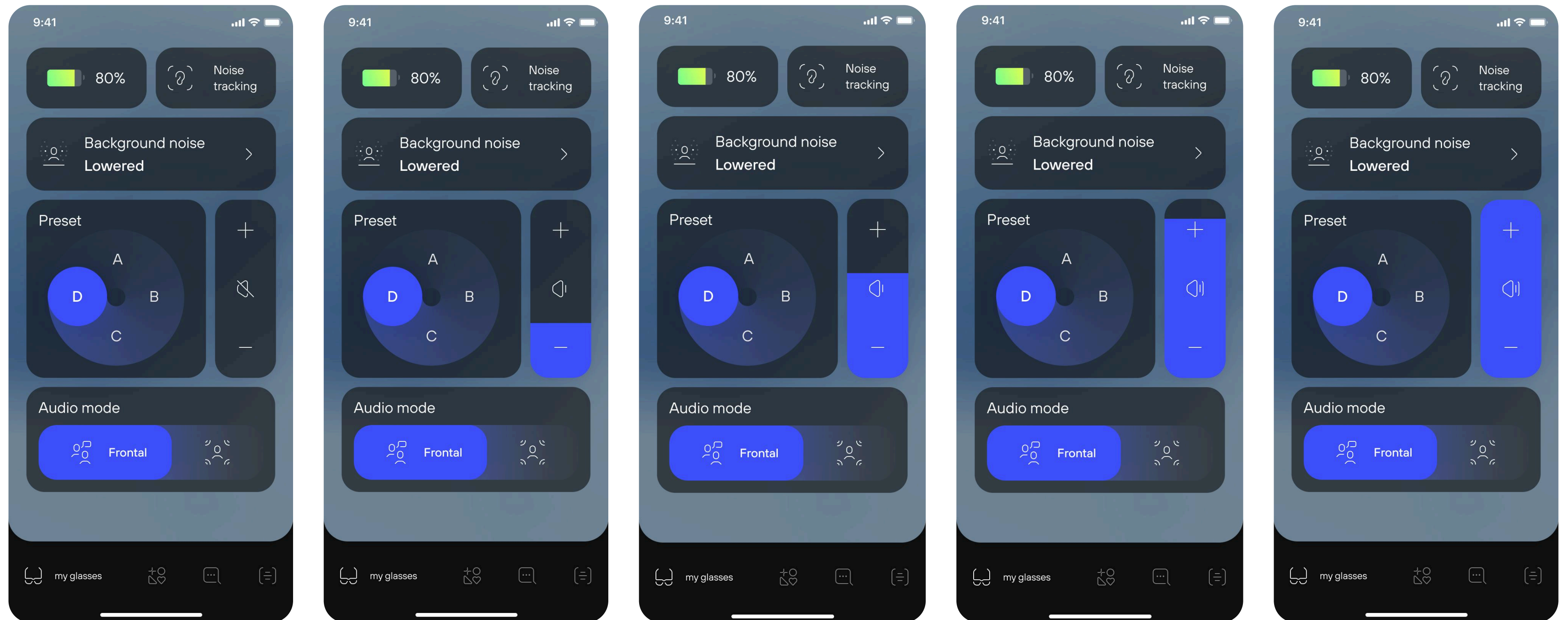




How to adjust eyewear volume?

With Nuance Audio App

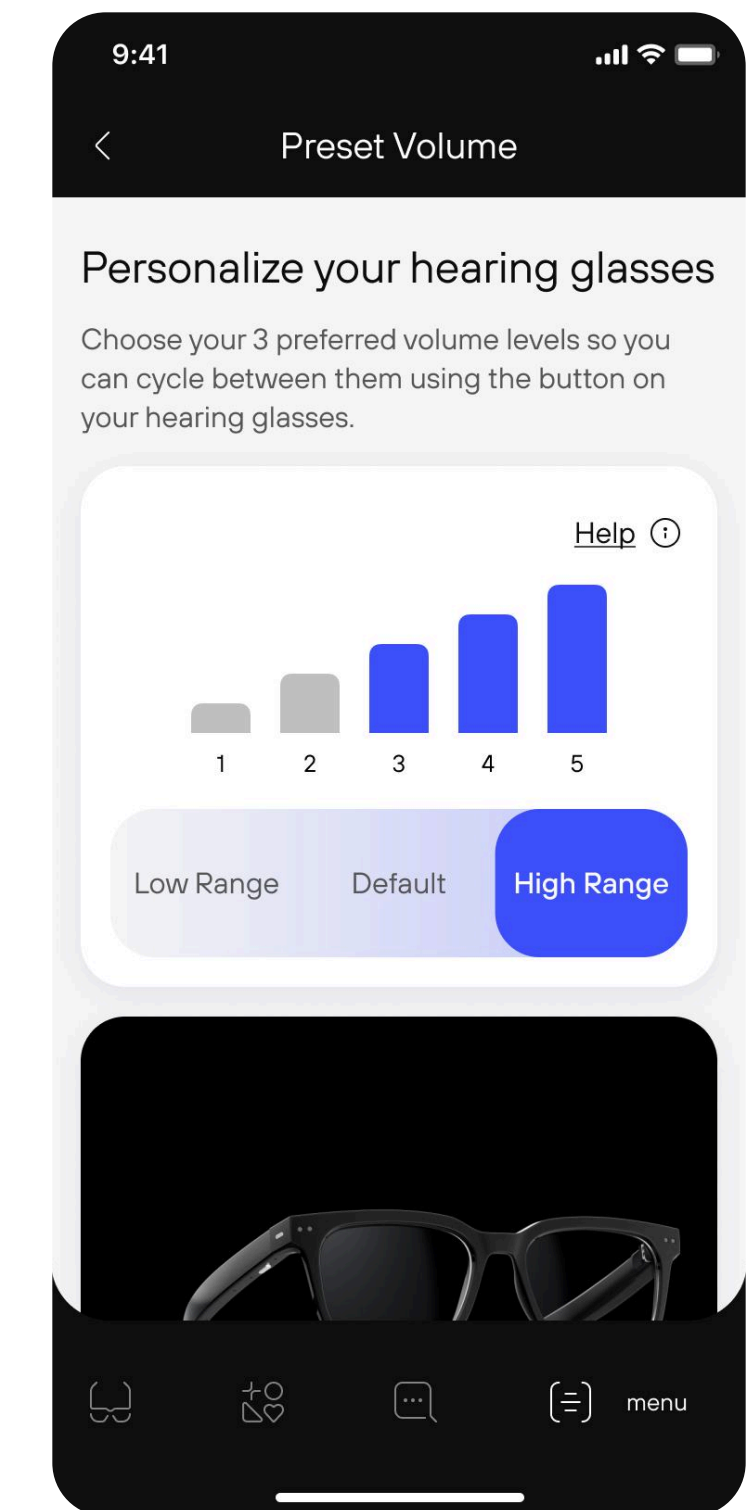
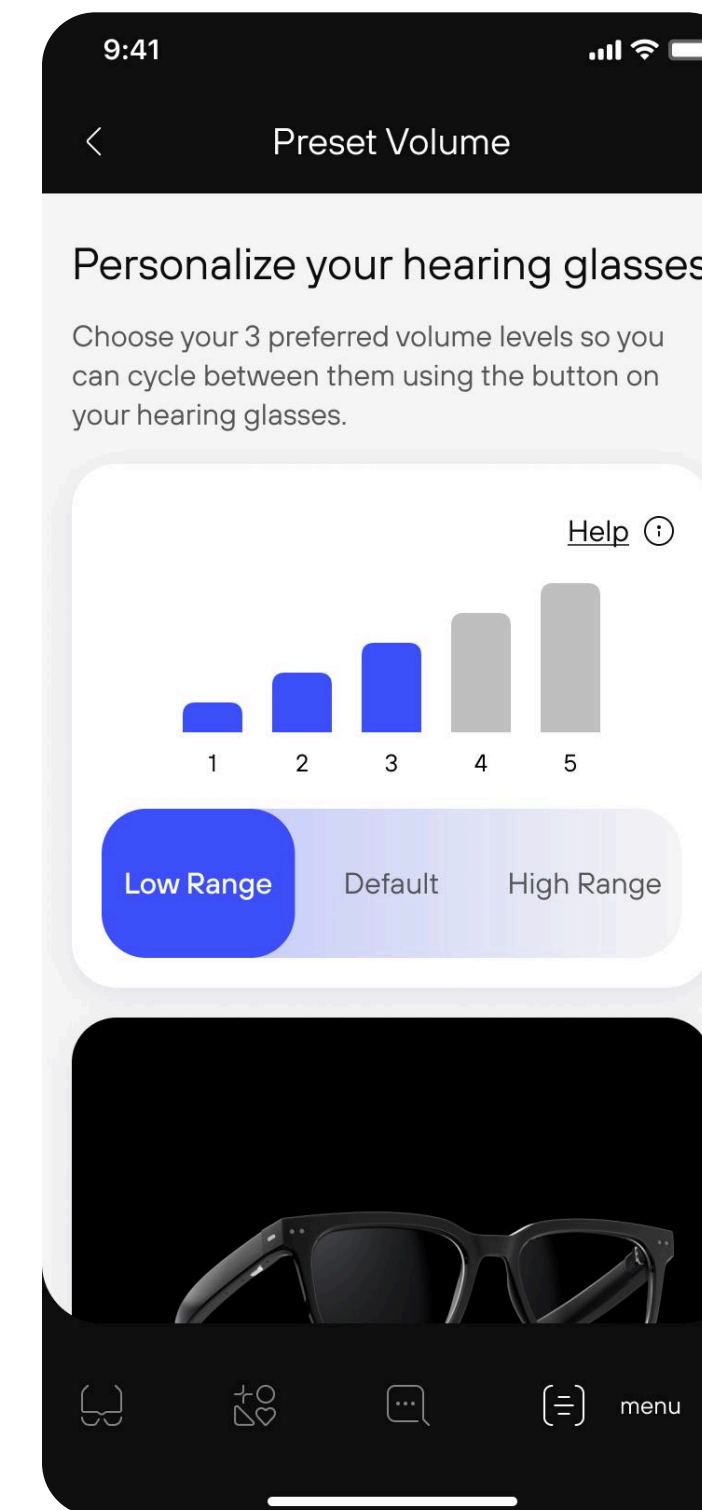
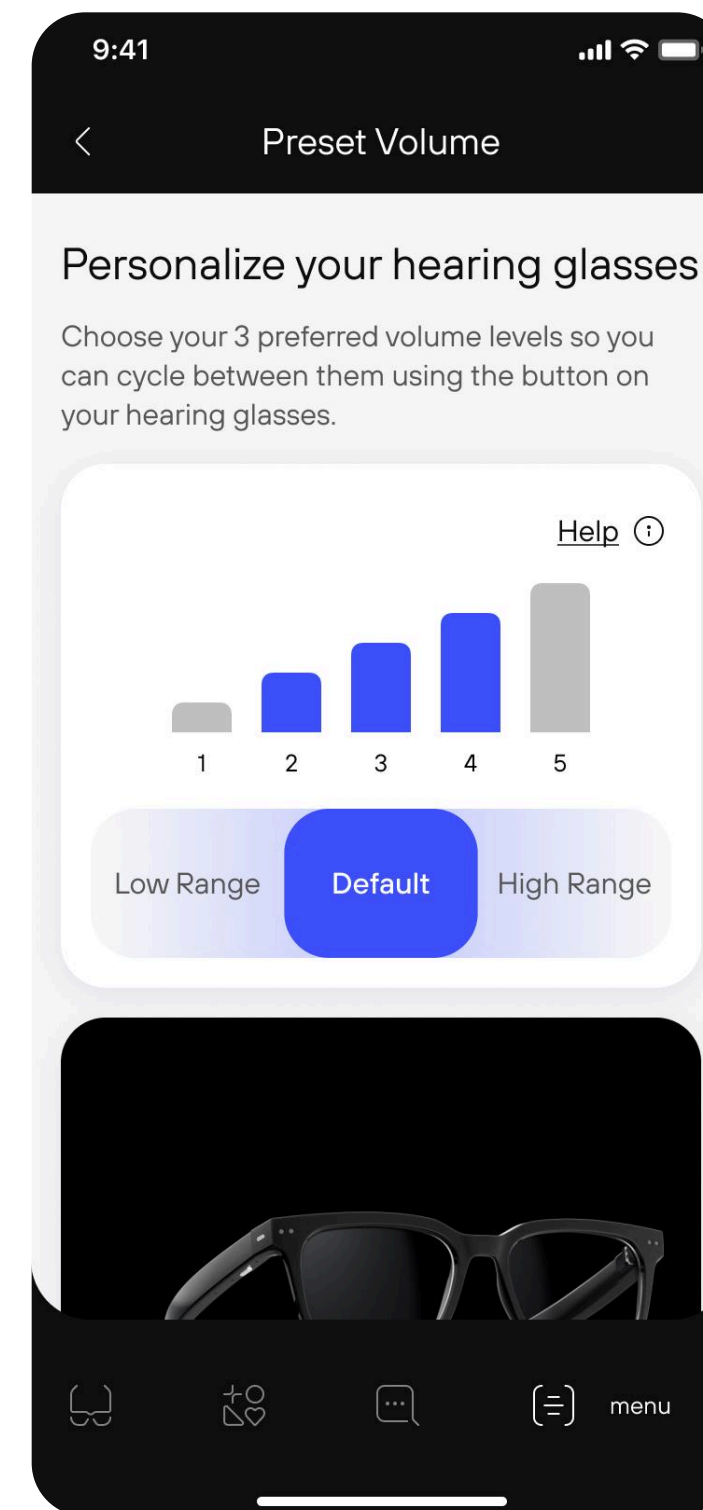
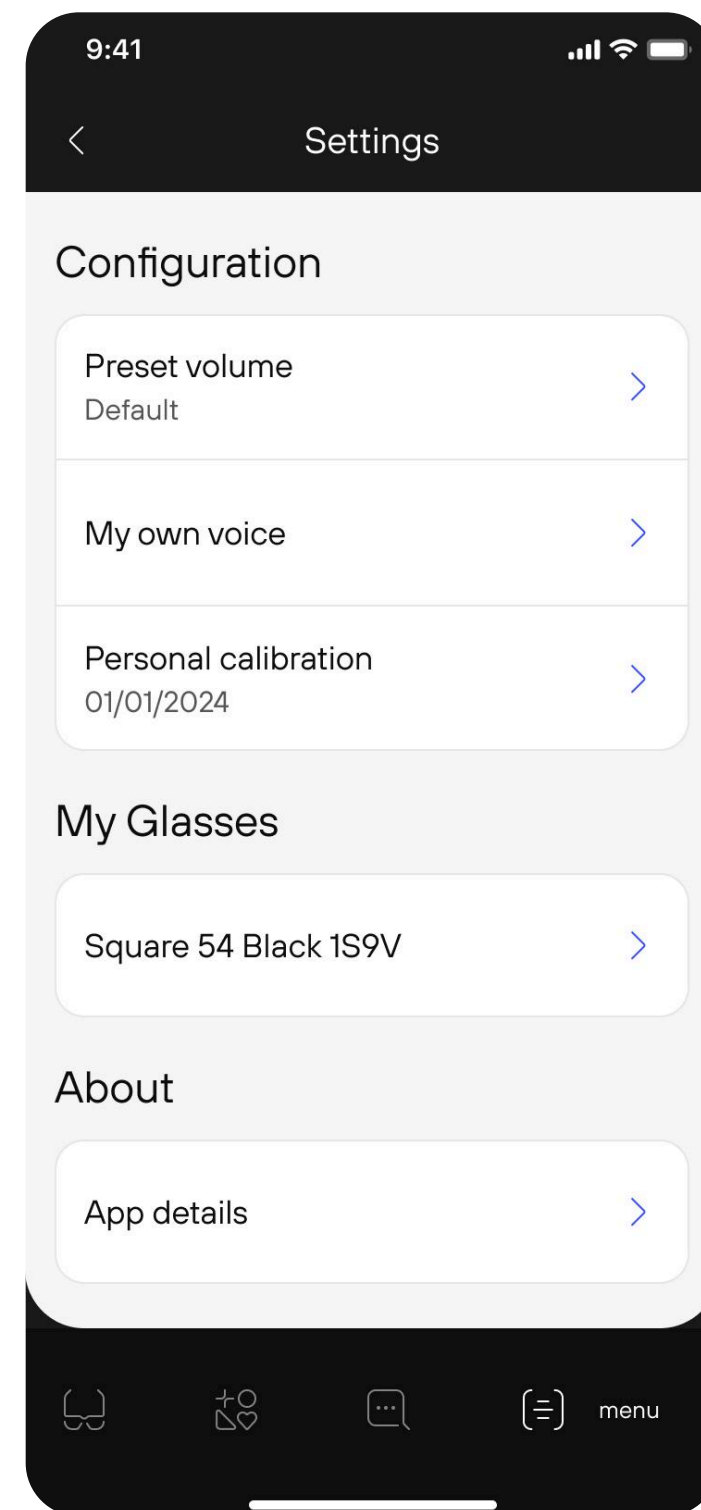
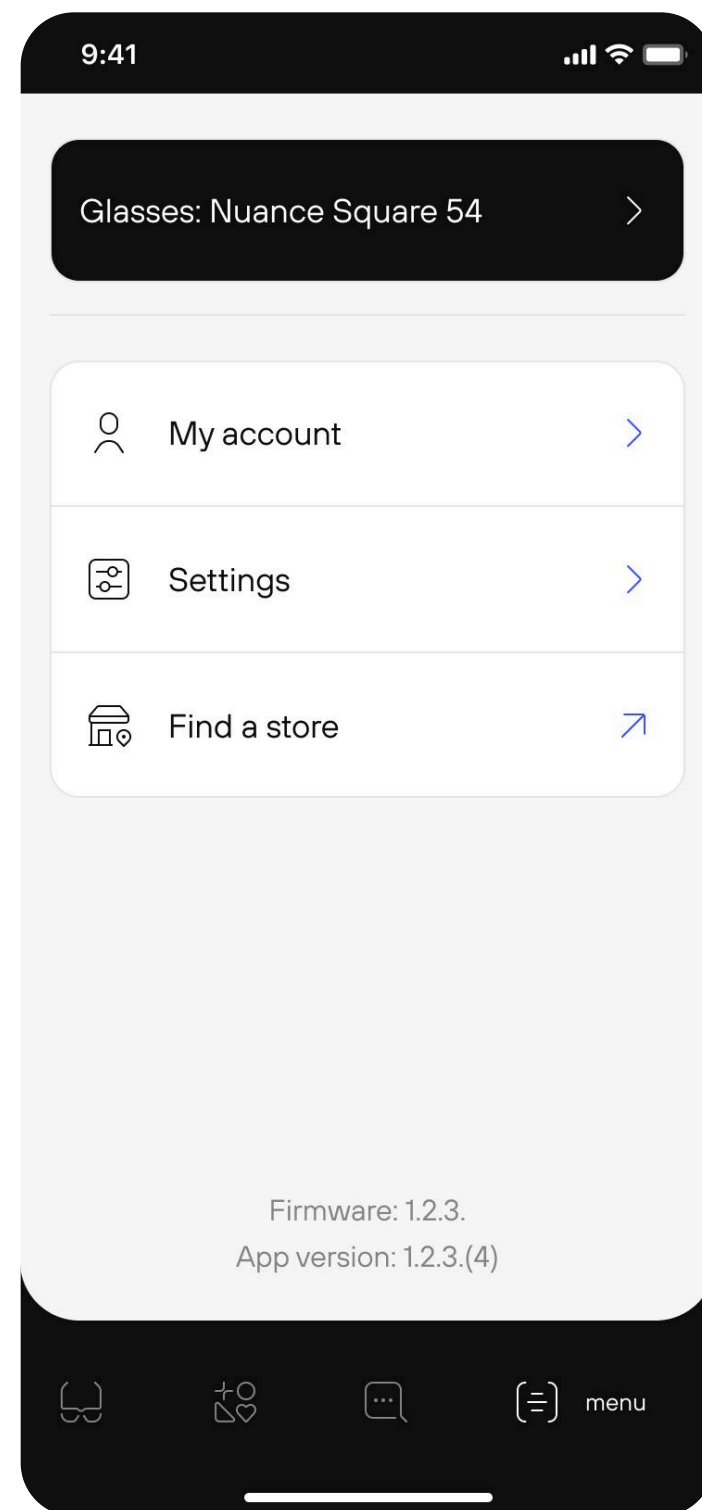
Another way is to use the Volume Slider on your Nuance Audio app's home screen to adjust the volume to your preference.





How to adjust eyewear volume?

With Nuance Audio App
Additionally, in the Settings section of the app, you can conveniently select and set your three preferred volume ranges for easy access.





For the most updated Instructions for Use
please follow this link

[↗ View Instruction for Use](#)