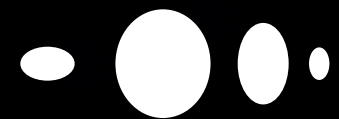




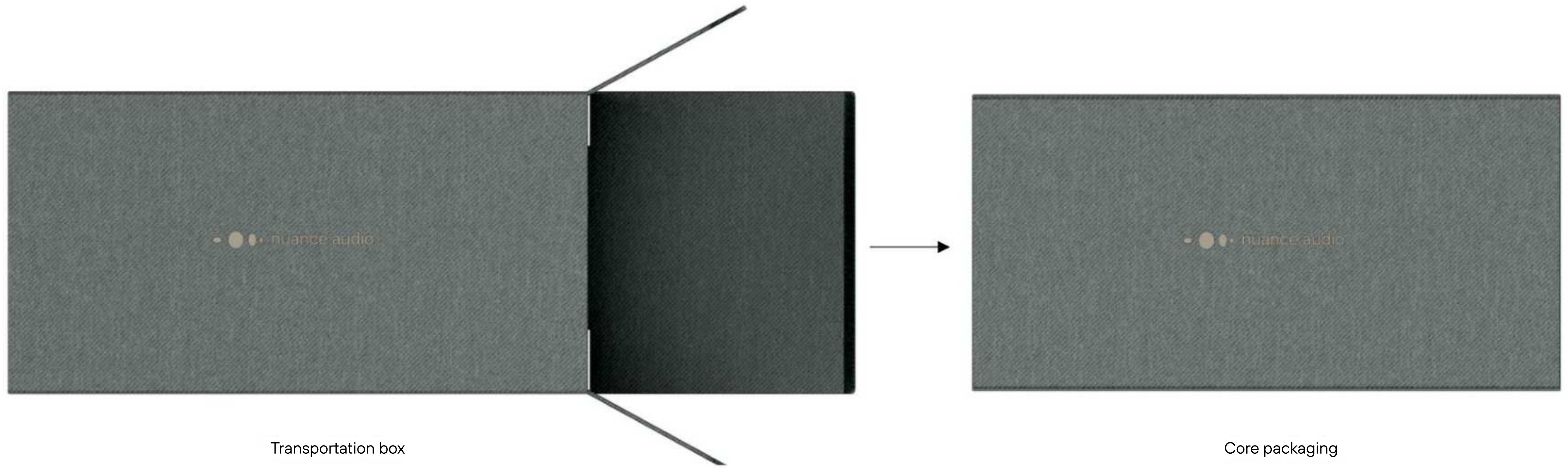
Getting started: account creation, pairing, calibration



Unboxing



Unboxing





Unboxing



Glasses



Charging pad



Cable wrap



Folded case



Envelope



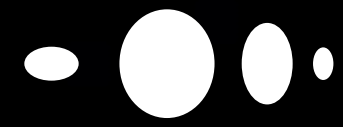
User guide



Safety & warranty



Cleaning cloth envelope + cleaning cloth



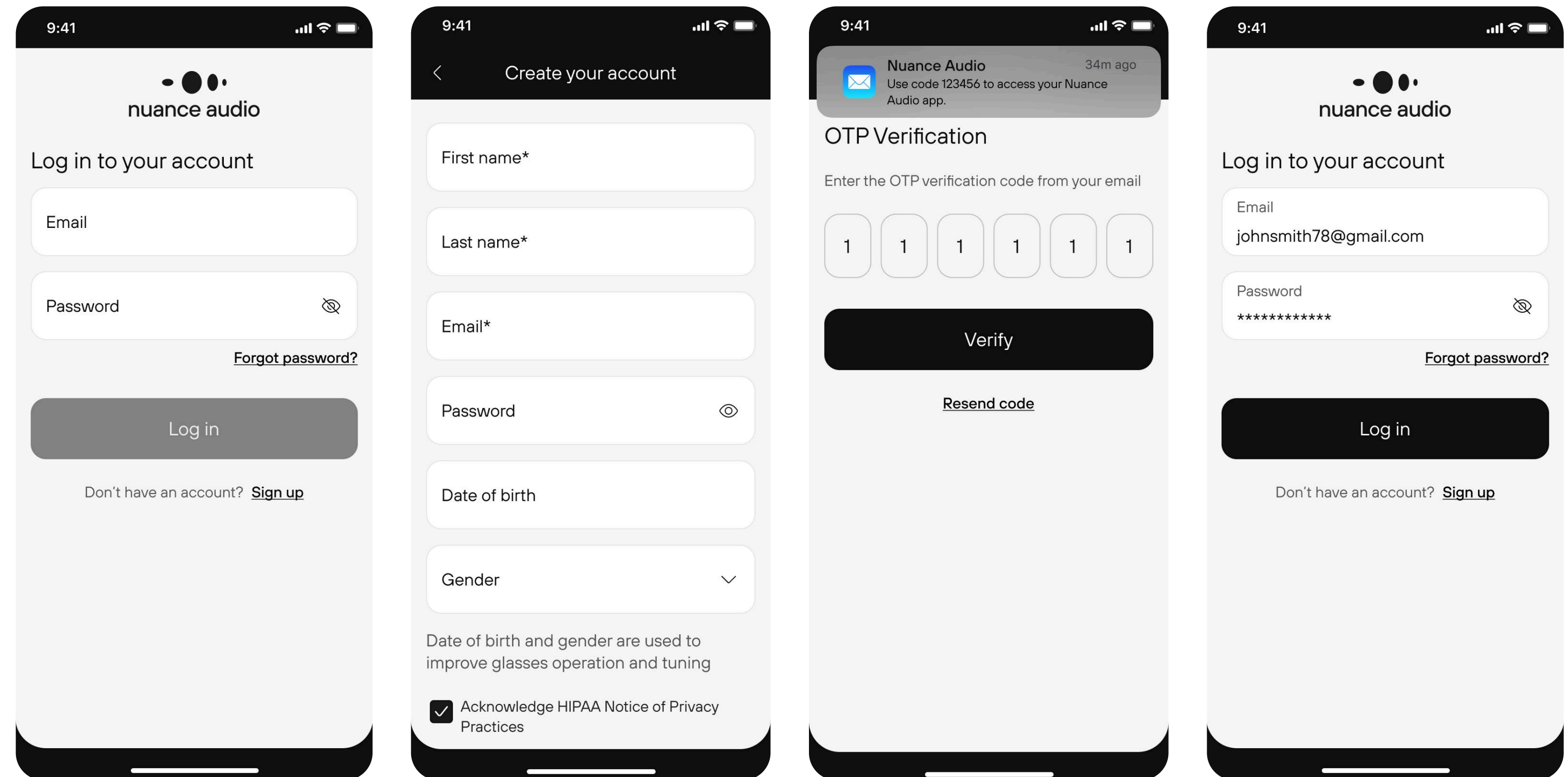
Activate and set up your Nuance Audio Glasses



Download app & sign up



To activate and personalize your Nuance Audio Glasses, **download the Nuance Audio App** from iOS App Store or Google Play Store, which contains the Instructions for Use.



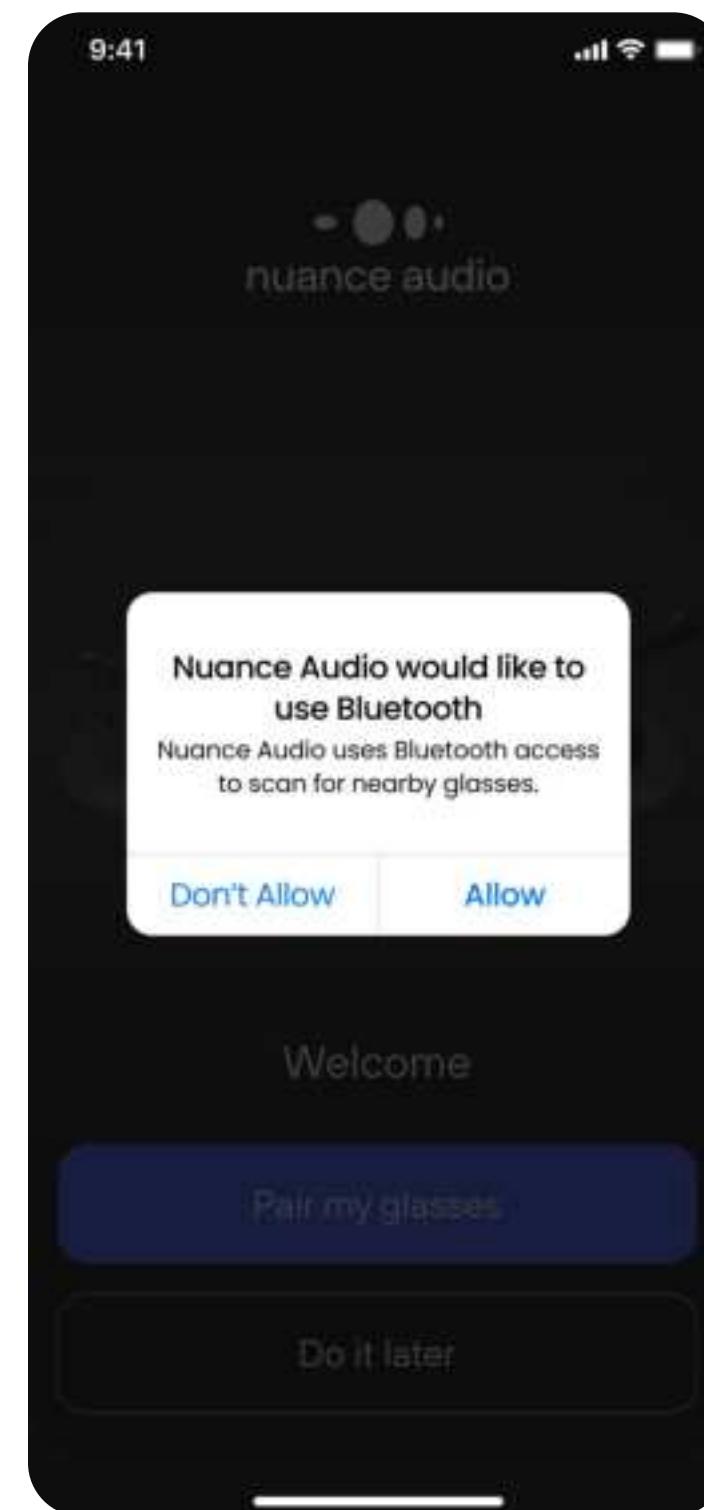
Open the Nuance Audio App and sign up or log in. Follow the step-by-step instructions provided on-screen to get started.



Glasses-phone pairing



Start pairing
Press **Start**



Allow Bluetooth permission.
Press **Allow**

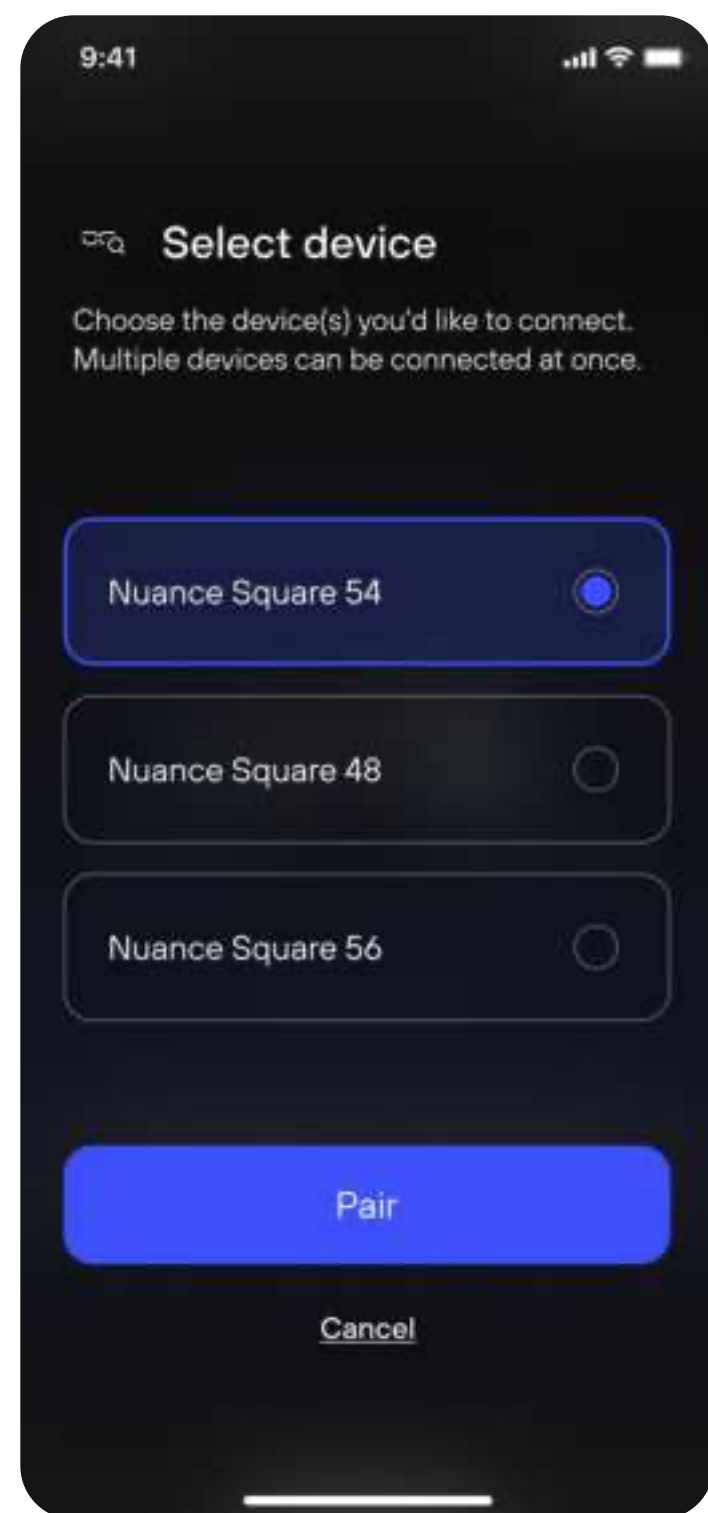


Enter pairing mode by **pressing & holding the multifunction button** until the blue LED blinks.

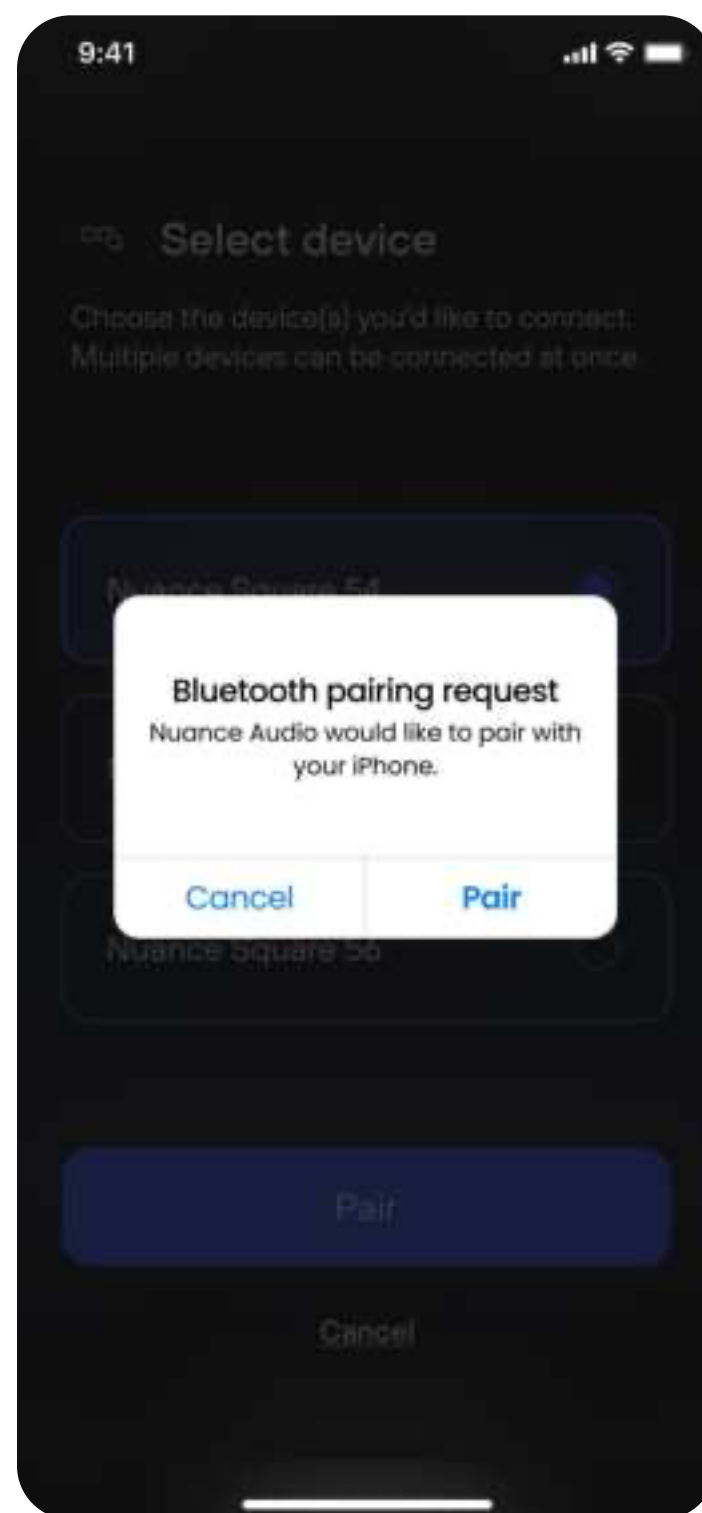




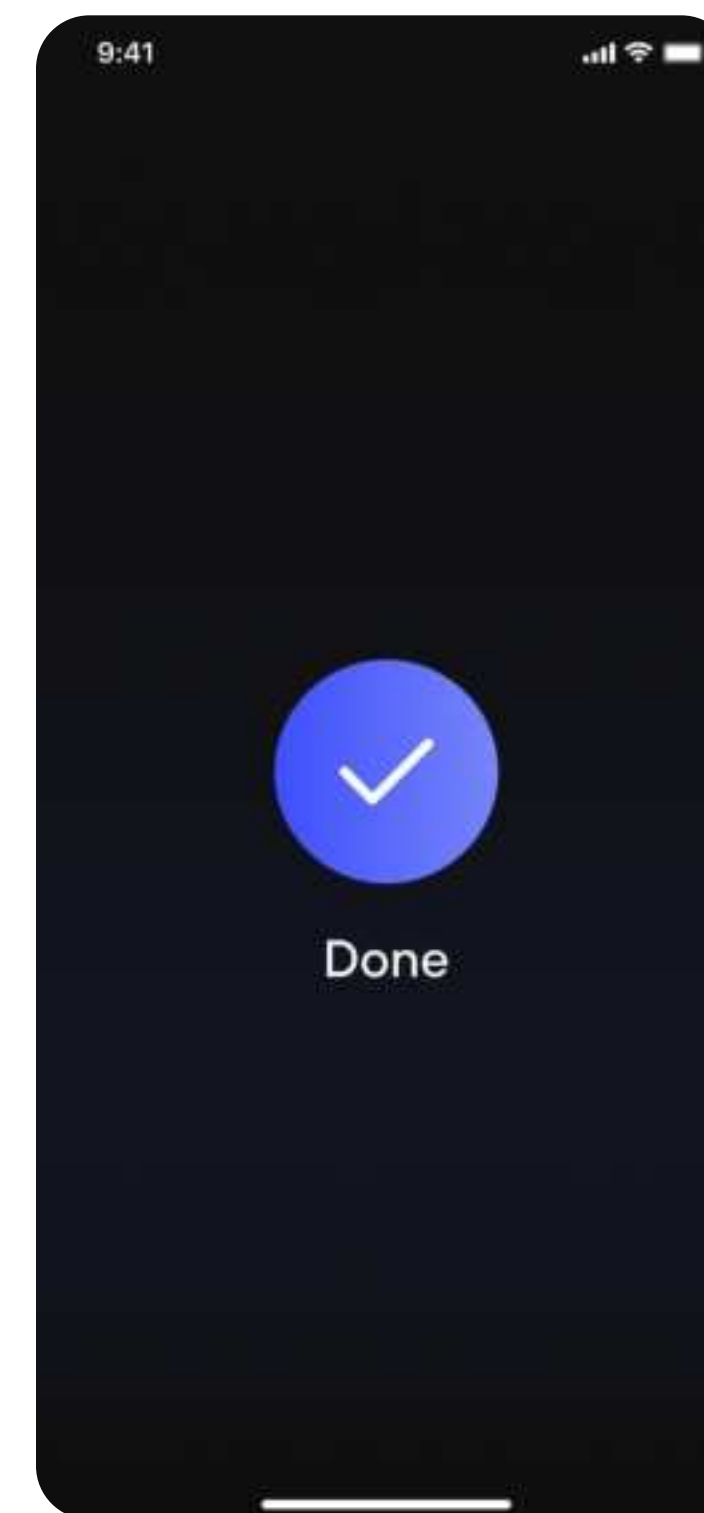
Glasses-phone pairing



Select Nuance Audio Glasses from the list. Press **Pair**



Accept the request to pair with your iPhone. Press **Pair**



Pairing complete.



Personal calibration



Calibrating will optimize your Glasses' audio performance to your head shape including:

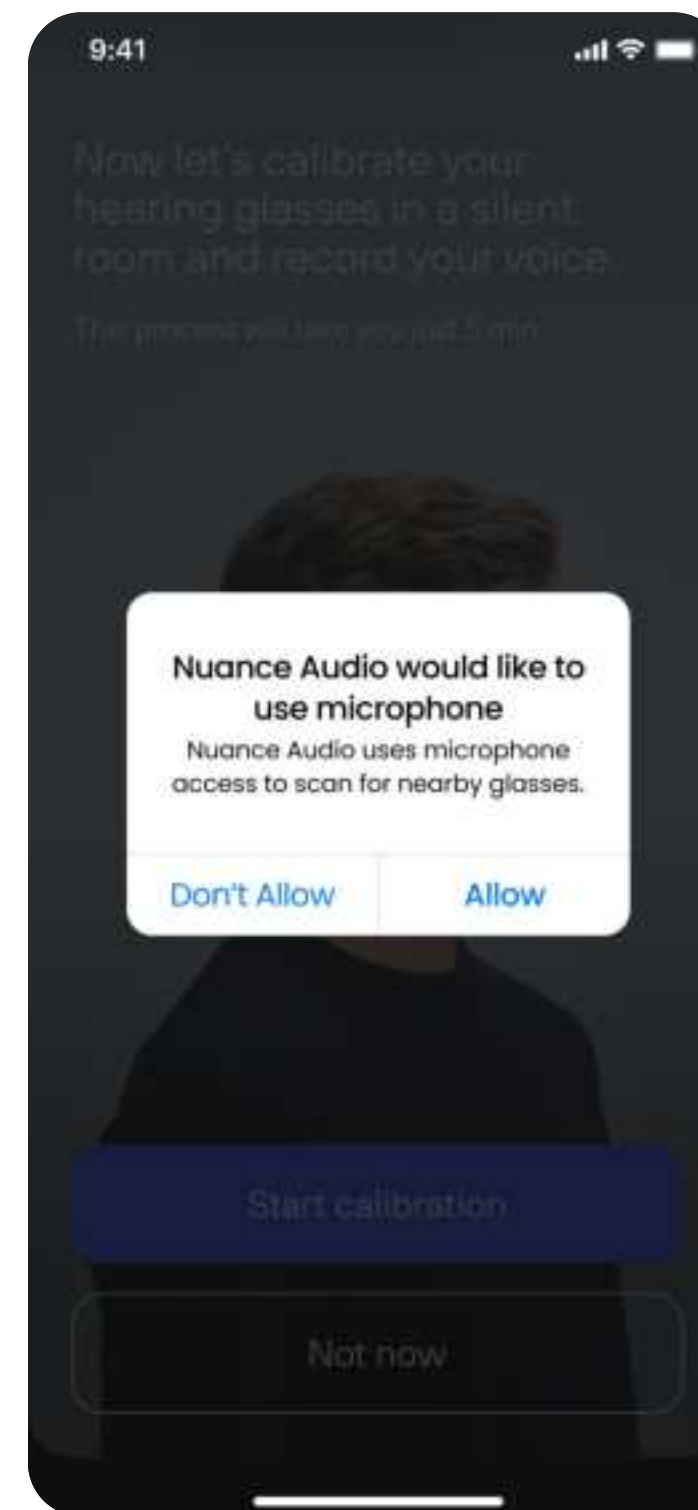
- Own voice reduction
- Acoustic feedback reduction

To start calibrating, find a silent room.

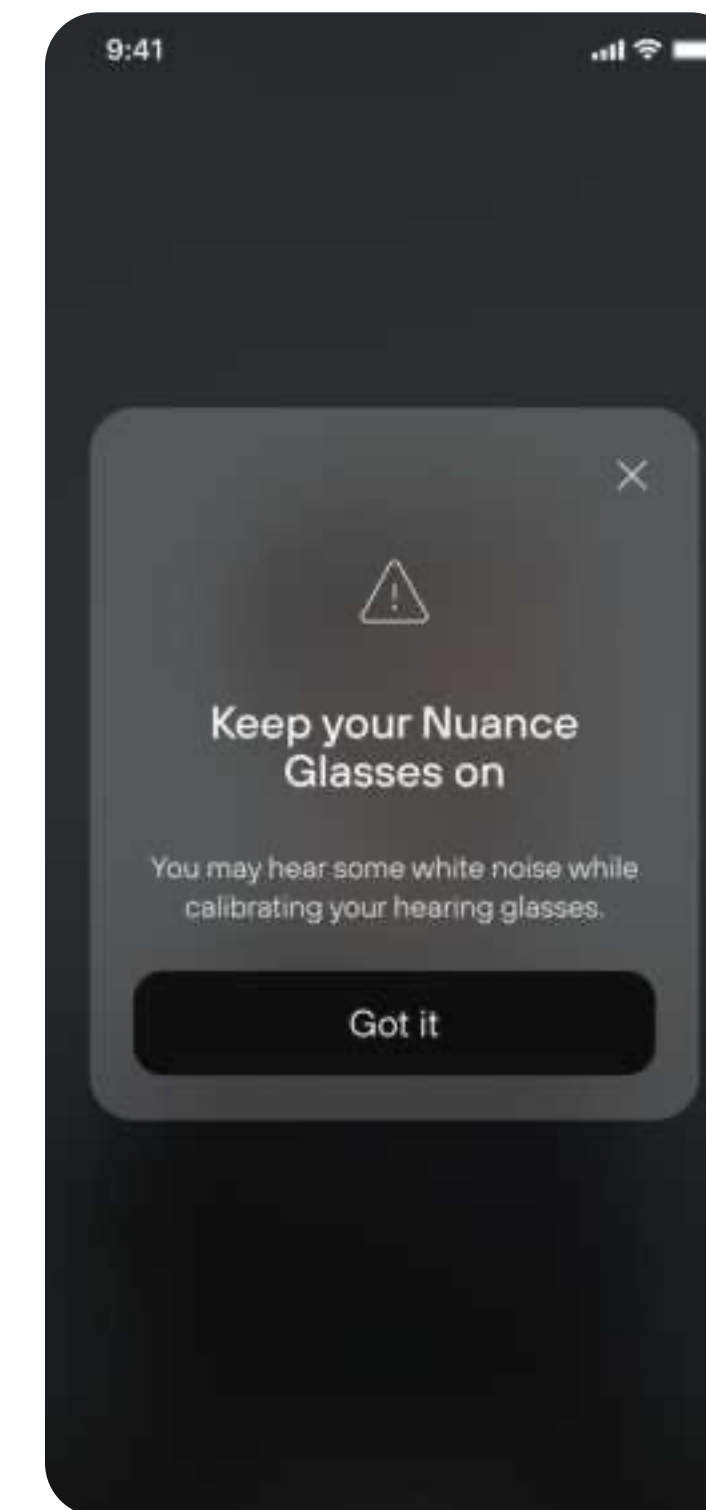
Press **Start calibration**

Notes

The calibration feature can be found in the settings. We recommend to perform calibration every 6 months.



Allow your phone's microphone to measure and validate sounds. Press **Allow**



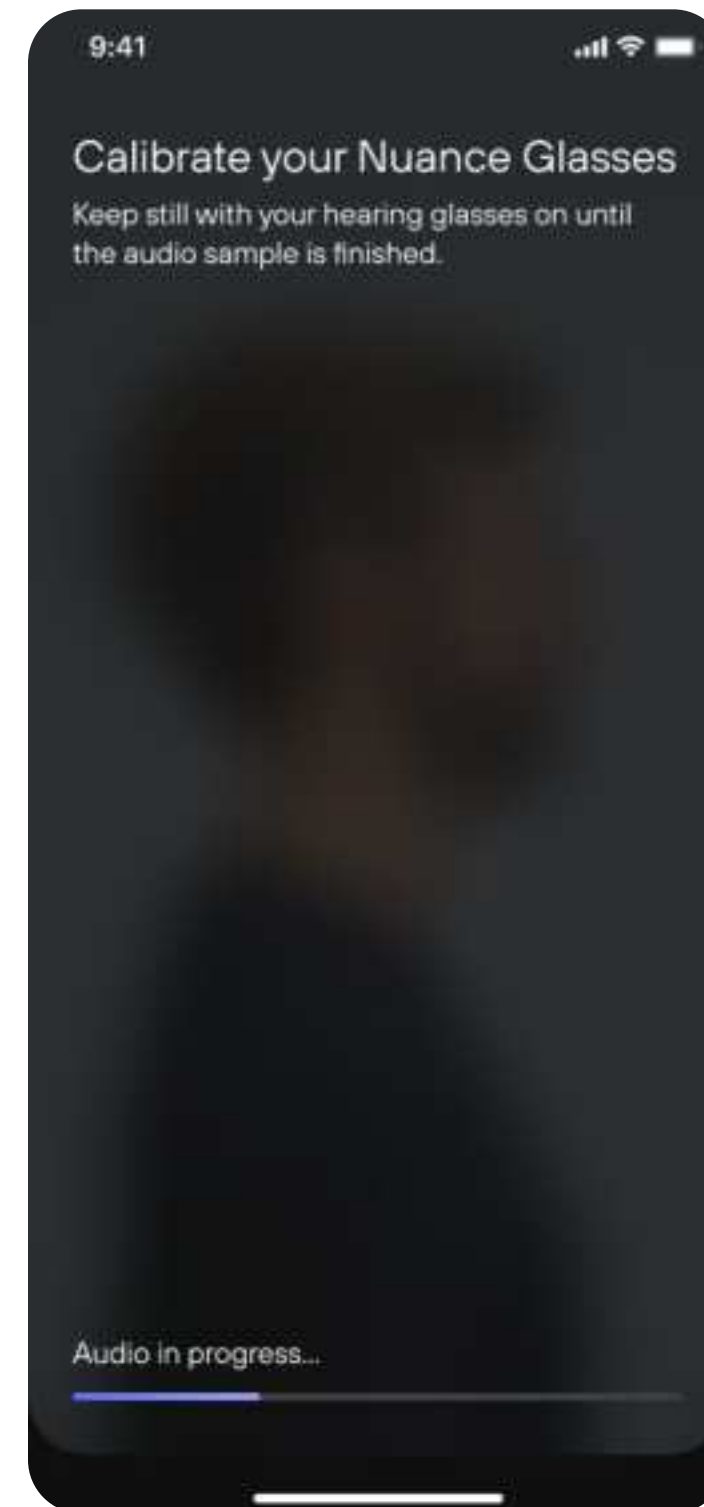
A pop-up will remind you to **keep your Nuance Audio Glasses on** during the entire process.



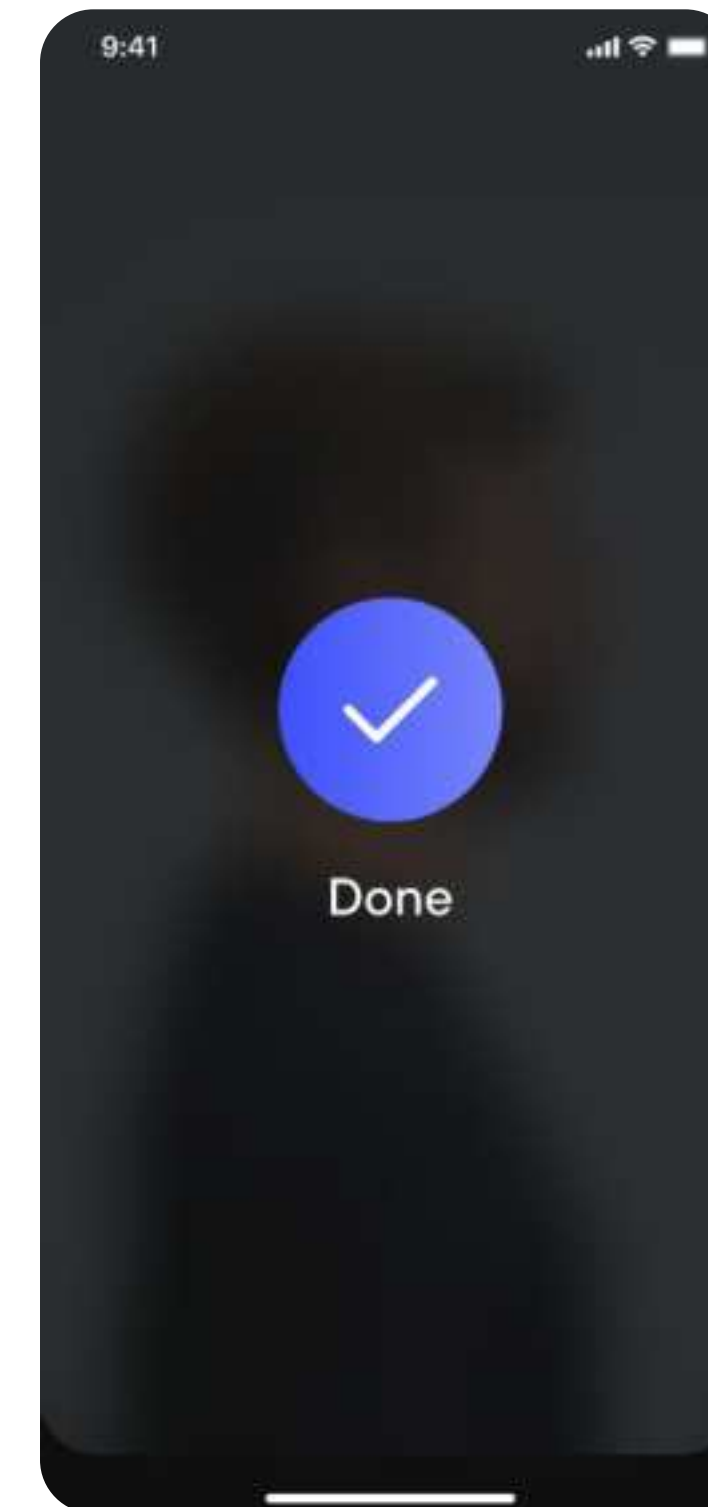
Personal calibration



Step 1.1
Environmental noise measurement.
Keep your glasses on and tap **Play audio sample**



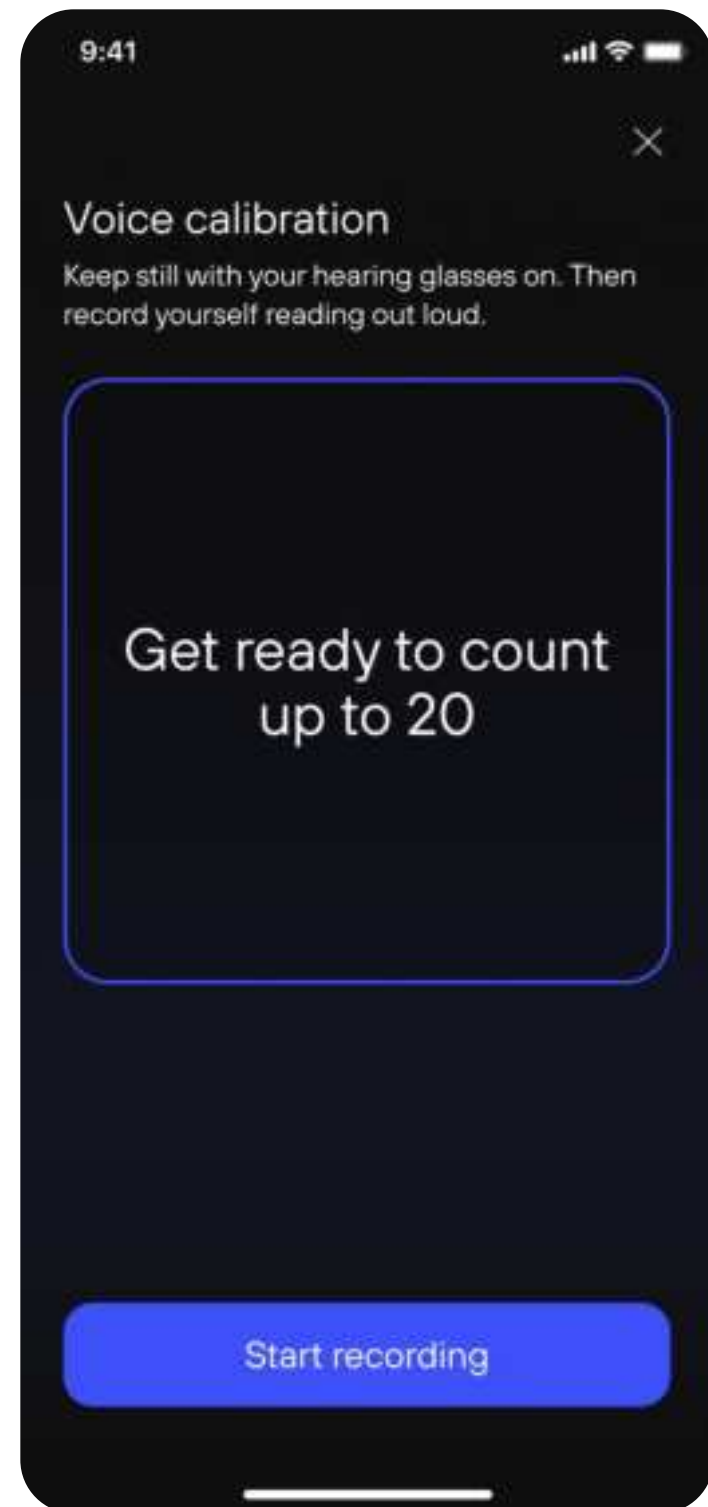
Step 1.2
Stay still and don't take off your glasses, **wait until the end of the audio sample.**



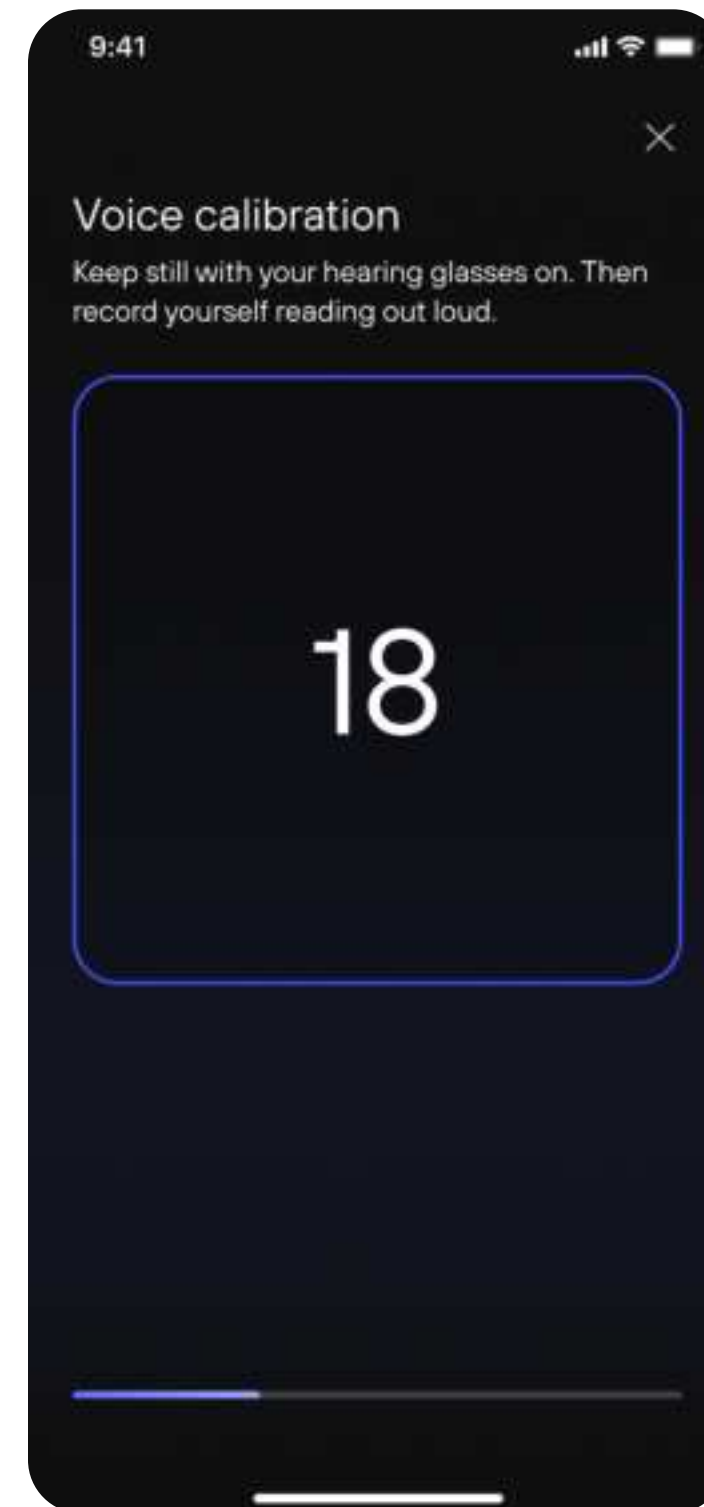
Step 1.3
Environmental noise measurement completed.



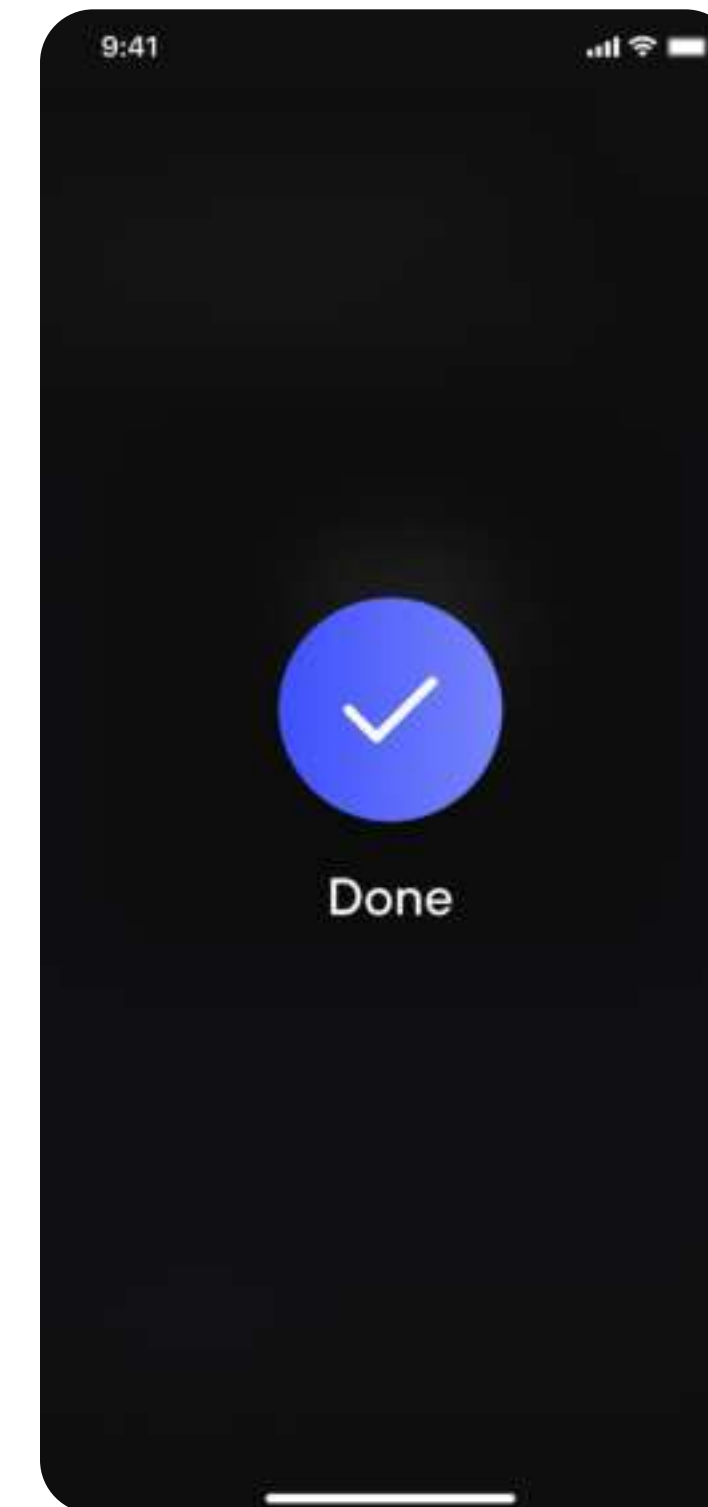
Voice calibration



Step 2.1
Own voice calibration.
Stay still and don't take off
your glasses
Press **Start recording**



Step 2.2
**Count out loud until the
progress bar reaches
the end.**



Step 2.2
Personal calibration
successfully completed.



How to make the most of your calibration?

Be sure you calibrate in a silent room.
If you own multiple pairs, calibrate each one individually.

Calibration takes just a minute but helps you get the best from your Nuance Audio Glasses.





For the most updated Instructions for Use
please follow this link

[↗ View Instruction for Use](#)